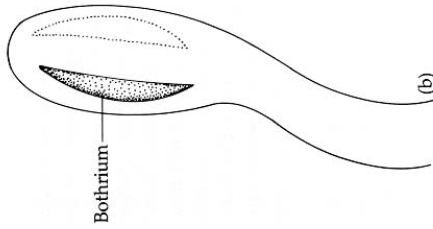
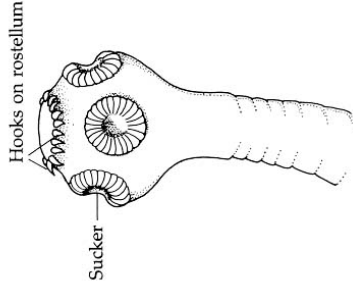


## Scolex with Slit-like Bothria



From Bogtisch & Cheng 1990, *Human Parasitology*, Saunders College Publishing, p. 219

## Scolex with Sucker-like Acetabula



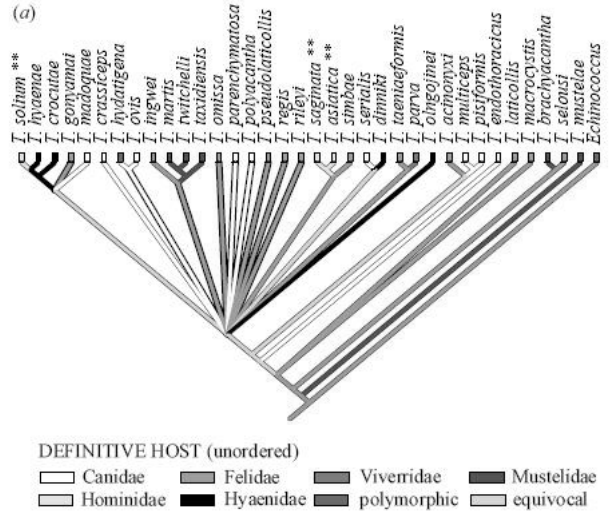
From Bogtisch & Cheng 1990, *Human Parasitology*, Saunders College Publishing, p. 219



## Out of Africa: origins of the *Taenia* tapeworms in humans

Eric P. Hoberg<sup>1\*</sup>, Nancy L. Alkire<sup>2</sup>, Alan de Queiroz<sup>2</sup> and Arlene Jones<sup>3</sup>

doi: 10.1098/rspb.2000.1579



Hoberg *et al.*, 2001, *Proc. Royal Soc. London B*