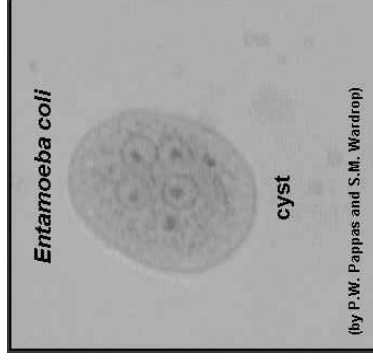


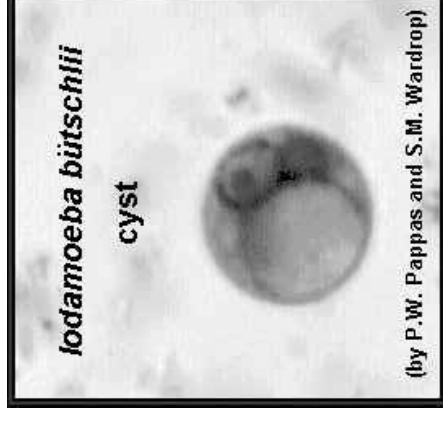
Cyst of *E. coli*



Four nuclei and the endosomes of two additional nuclei are visible in this plane of focus; approximate size = 24 μm .

http://www.dpd.cdc.gov/DPDX/HTML/ImageLibrary/FreeLivingAmebic_il.htm

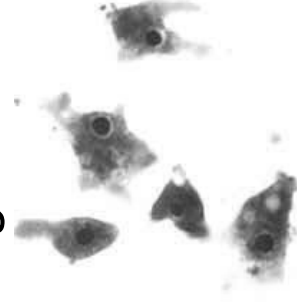
Cyst of *Iodamoeba bütschlii*



The large, characteristic glycogen vacuole, is the clear spherical organelle; approximate size = 15 μm .

http://www.dpd.cdc.gov/DPDX/HTML/ImageLibrary/FreeLivingAmebic_il.htm

Naegleria fowleri



Naegleria fowleri trophozoites, cultured from cerebrospinal fluid. These cells have characteristically large nuclei, with a large, dark staining karyosome. The amebae are very active and extend and retract pseudopods. Trichrome stain. From a patient who died from primary amebic meningoencephalitis in Virginia.

http://www.dpd.cdc.gov/DPDX/HTML/ImageLibrary/FreeLivingAmebic_il.htm