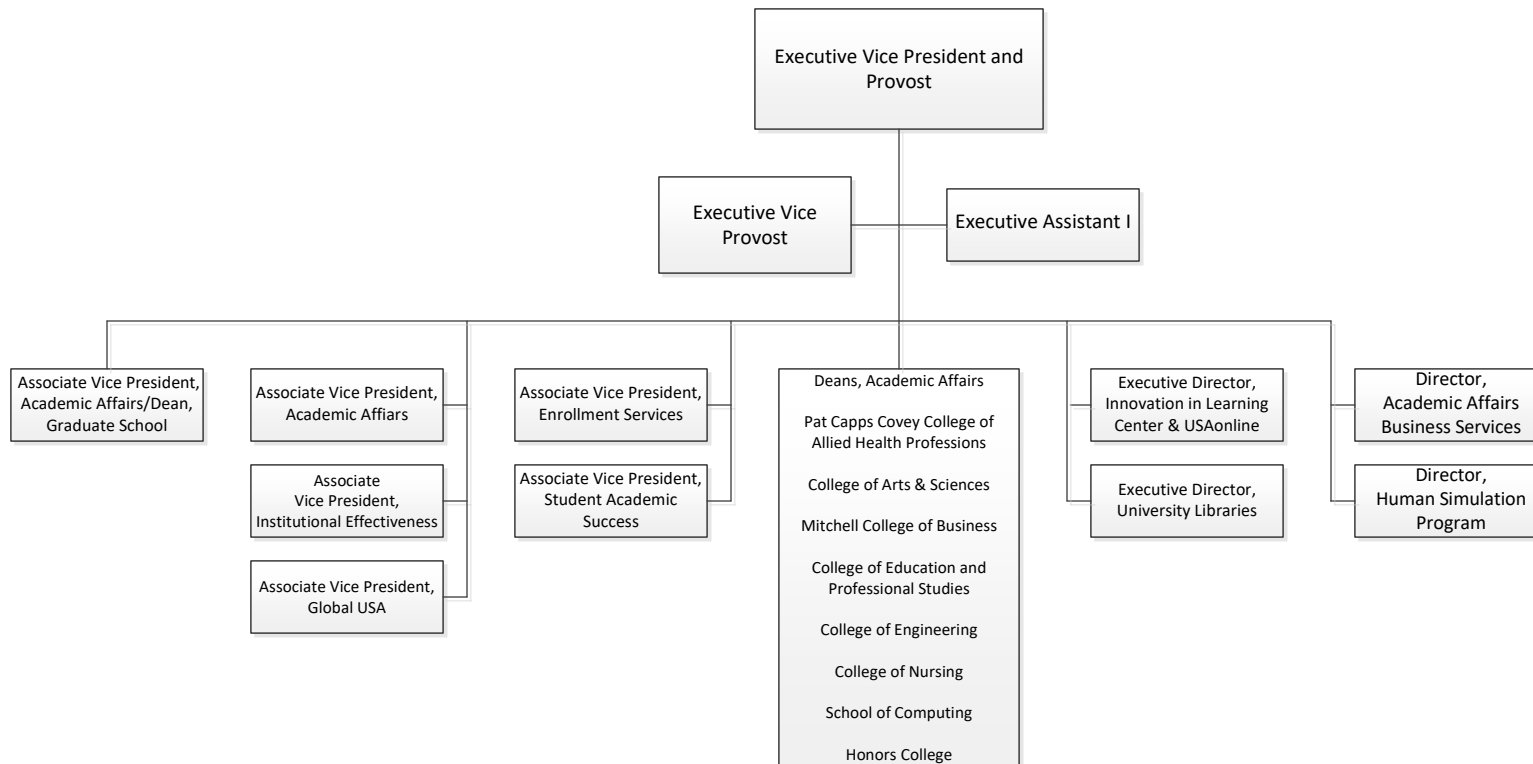
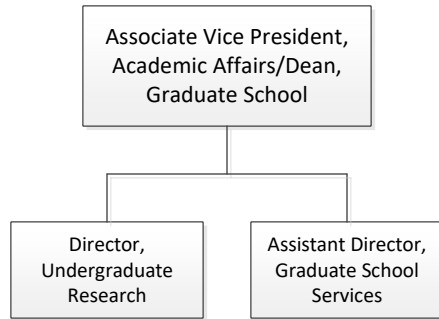


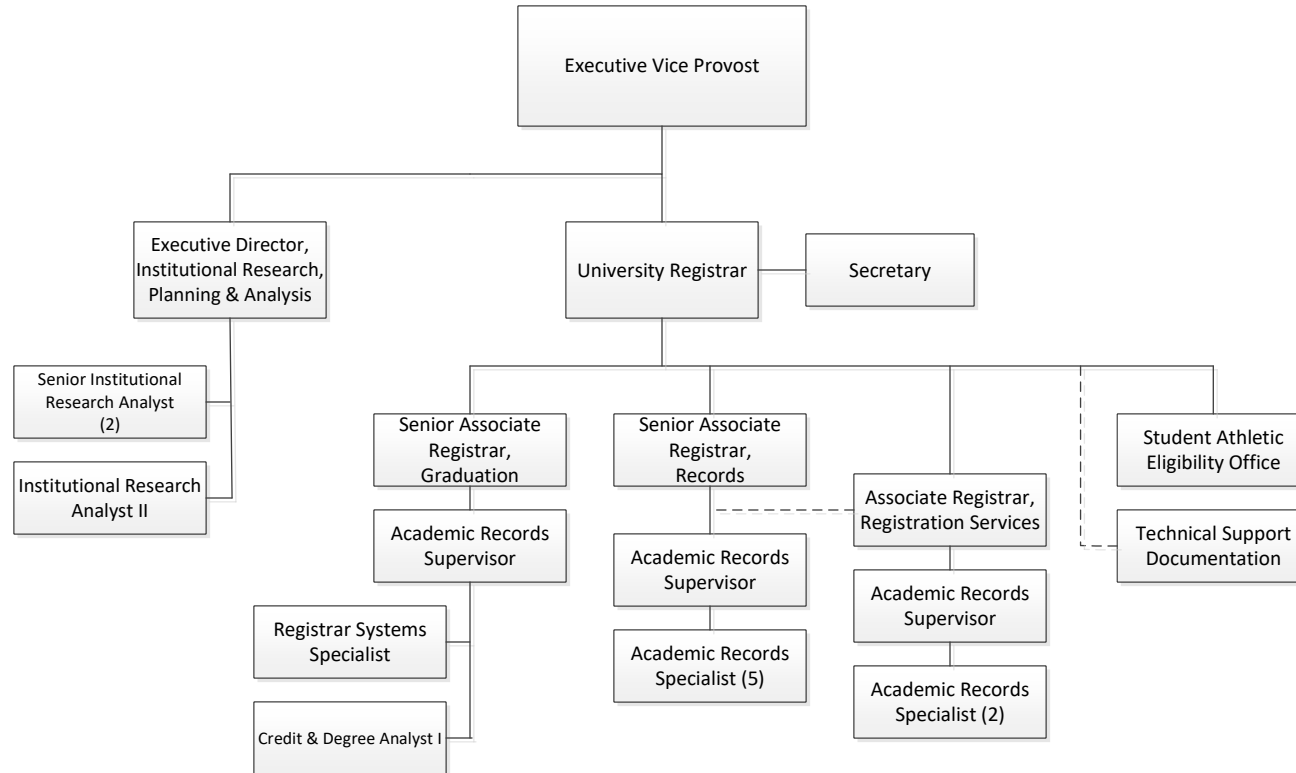
University of South Alabama Academic Affairs



**Academic Affairs
Graduate School**

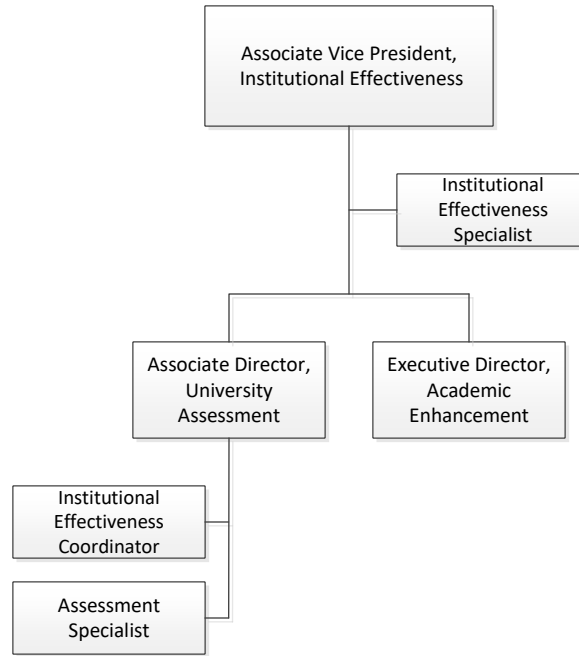


Academic Affairs Executive Vice Provost

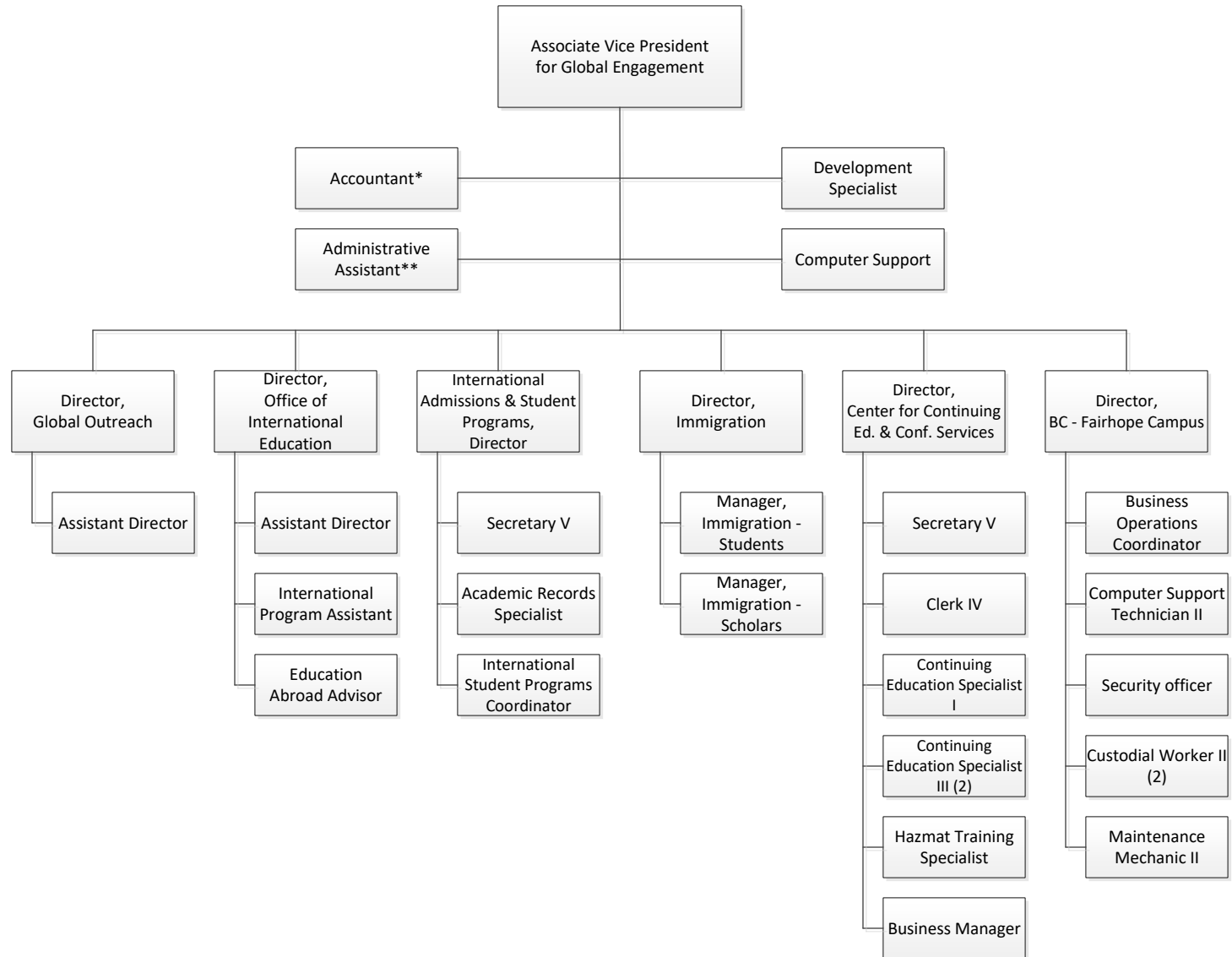


Academic Affairs

Institutional Effectiveness



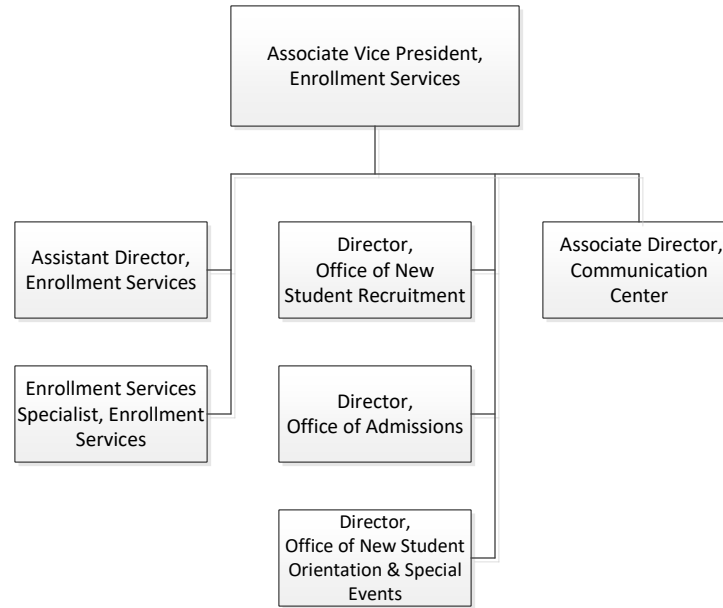
Academic Affairs Global USA



*also reports to Director, Center for Continuing Ed. & Conf. Services

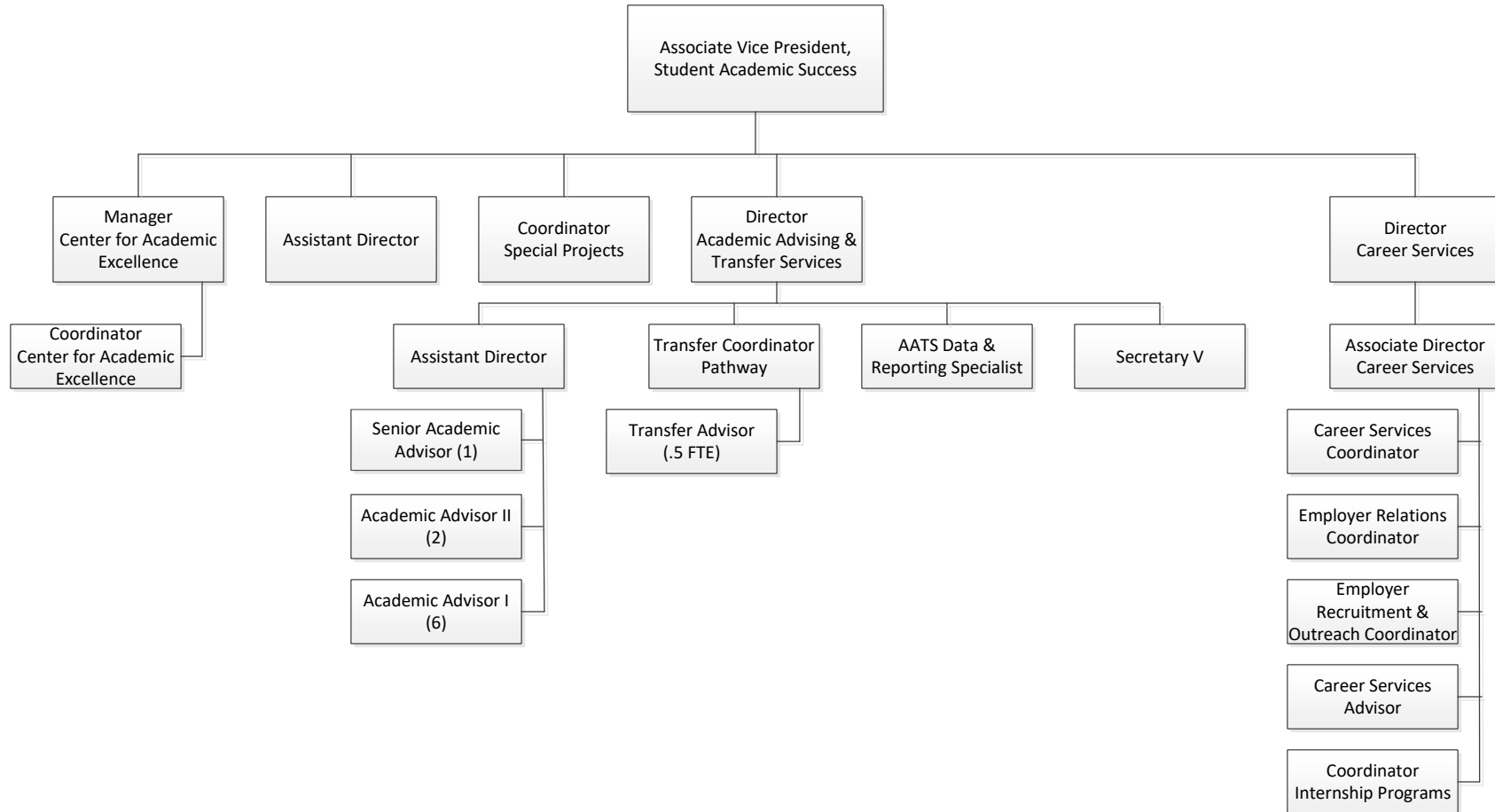
**also reports to Director, Global Outreach

Academic Affairs Enrollment Services

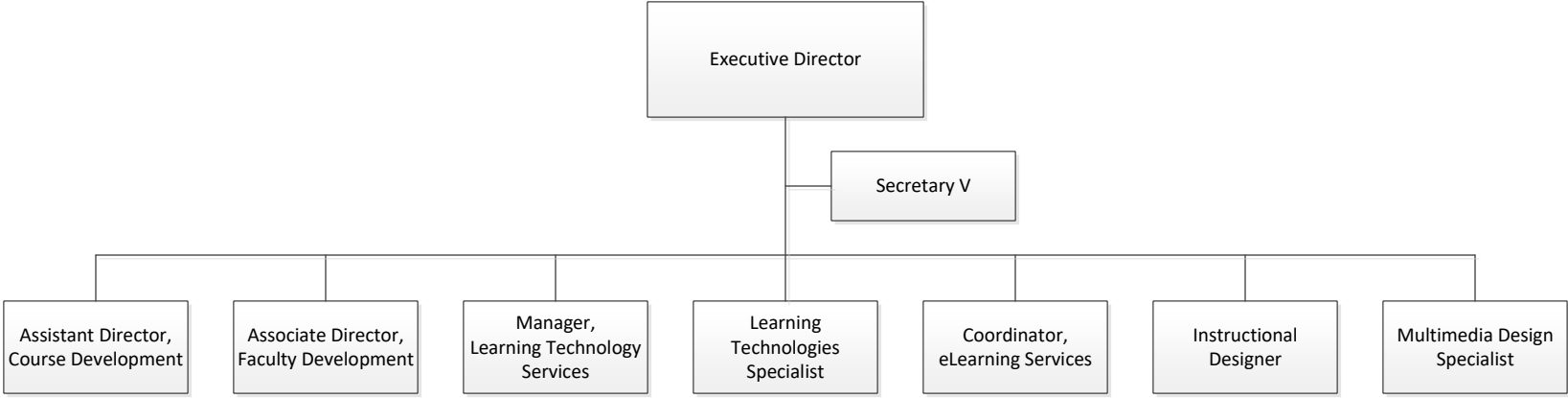


Academic Affairs

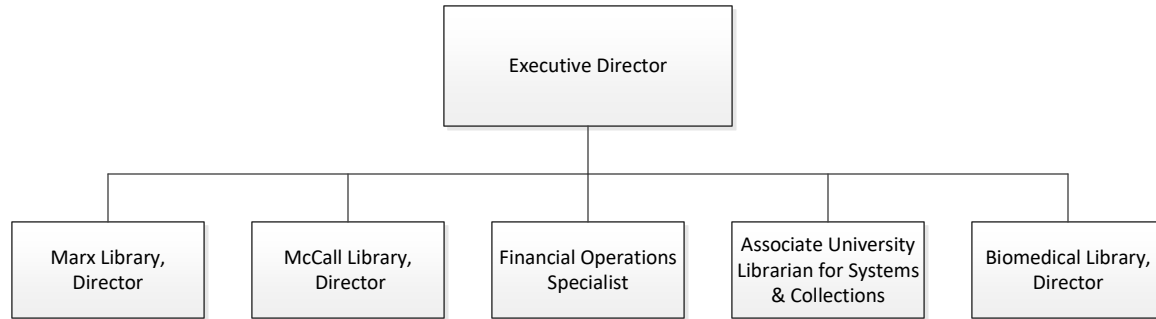
Student Academic Success



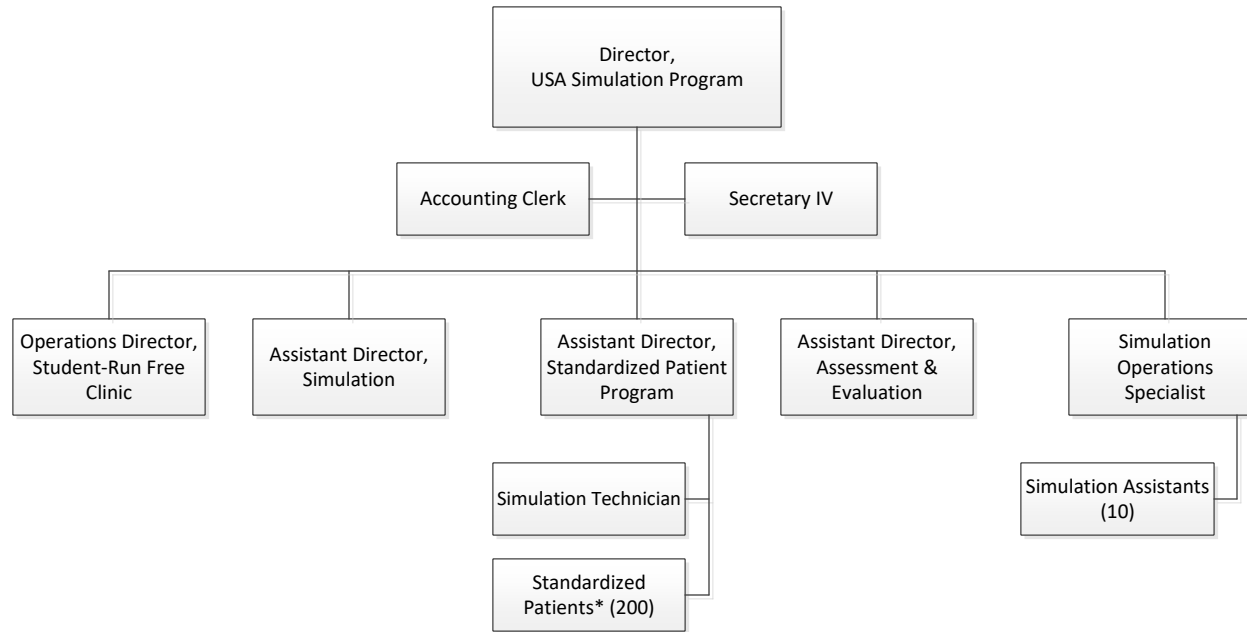
**Academic Affairs
Innovation in Learning Center & USAonline**



**Academic Affairs
University Libraries**



Academic Affairs Simulation Program



*Standardized Patients are contract hires and fluctuate in numbers based on programmatic needs.