

Dog River Watershed Storm Drain Marker Project

Did you know storm drains are not part of the sewage system that treats water from toilets, sinks and bathtubs?



Storm drains flow directly into local streams that empty into Dog River. Dog River empties into Mobile Bay.

Each time it rains, water washes over our streets and yards. Along the way it picks up pollutants such as motor oil, pet waste, lawn chemicals, anti-freeze, and other toxins. Litter and lawn clippings clog storm drains and cause flooding. It is a crime to put anything except water into storm drains.

What can you do?

- Do not dump or put anything in a storm drain except water.
- Use fertilizers and pesticides sparingly and follow directions.
- Keep yard waste, trash, and dirt out of the streets and gutters.
- Bag or flush pet waste.
- Park your car on the grass while you wash it or go to a car wash.

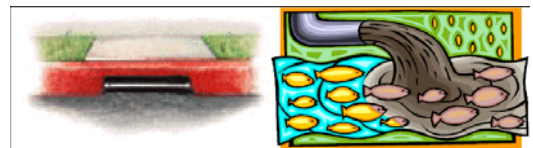
How can you help?

The storm drain marker project is a simple way to help reduce pollution from storm water runoff. There's a good chance you live, work or play in the Dog River Watershed. To participate contact 510-0403 or Val@DogRiver.us.

Look for these blue markers on a storm drain near you!



**Storm drain markers
remind us that anything
put in a storm drain
goes directly into our
streams and Dog River.**



ONLY RAIN IN THE DRAIN!



Dog River Clearwater Revival
<http://dogriver.southalabama.edu>